



THE ROCK
EXPOSURE • GROUNDED • UNPLUGGED

NEWSLETTER

MAY 2016

Hello ROCK Friends, I hope May means spring has finally arrived to Michigan. As I was working on our professional development programs I came upon some key concepts I thought I would share with you. Keep these in mind for yourselves and use them to encourage young people around you. One of my favorites is **PERSISTENCE**: the art of continuing to do what you think is important even when things get difficult or you don't experience success. Another one I really like is **COURAGE**: being able to do what you think is important, even when you feel fear, uncertainty, or intimidation. Stay strong and kind!

Beverlee Wenzel | Executive Director

WE CELEBRATE OUR ROCK EXPOSURE STAFF

ROCK Exposure is our life skills and character development program. Exposure coaches are a caring, dedicated group of people who take time out of their busy lives to work with teens. Below you can see what our coaches have been up to this school year:

- Tifani Autry:** Holy Cross Children's Services, Bridgeport High, Atkins Middle
- Rebecca Cox (Volunteer):** Northeast (NE)
- David Dauer:** Bullock Creek (BC) Middle
- Jill Deitsch:** ACEA, Coleman Middle, BC Middle, Meridian High
- Bill Gutzwiller (Volunteer):** Saginaw Juvenile Detention Center
- Amanda Keatts:** Holy Cross Children's Services
- Sharon Miller (Volunteer):** Jefferson Middle School (JMS)
- Ronnie Neumann (Volunteer):** NE
- Lisa Orlando (Volunteer):** Saginaw Juvenile Detention Center
- Elaine Schloemann:** NE, BC High, Meridian High
- Eugene Seals:** Holy Cross Children's Services, Bridgeport High School, Atkins Middle
- Matt Smith:** BC High, Meridian High
- Erik Szyperski:** Pinconning High, NE
- Jodi Vercellino:** BC Middle
- Sarah Weisbarth:** JMS, Meridian High

Our Exposure program managers, Kylie Anderson and Tyler Porter, have also been at: H.H. Dow High, Midland High, the Midland County Juvenile Care Center, and Bay Arenac Community High School. They've also run various programs at the Greater Midland Community Center, including GEMs and Jobs 101.

The ROCK greatly appreciates everything that our Exposure coaches do—thank you!

SUMMER EXPOSURE PROGRAMS

Sign up for these FREE fun experiences!

- June 20—GameFest!** Enjoy a fun-filled day of teambuilding games & activities, while developing skills in communication, problem solving, and more!
- July 25—Take Action Midland!** Learn about community engagement and volunteerism through fun projects and guest speakers!
- August 22—In Charge!** Attention future leaders—experience an exciting day of games and activities on the topic of leadership!

Programs are FREE and include breakfast and lunch. Each program runs 8:30am—1:00pm. Appropriate for students in or entering middle or high school. Come to as many as you'd like! Giveaways offered at each program. Those who attend all three get a bonus prize! Each opportunity is an intentional day of activities designed to be both fun and inspiring—your student will gain valuable skills in our youth development programs while making friends and having a blast!

Pre-registration form required and can be found on our website. For questions, contact Tyler or Kylie at 989.835.2542, tyler@therock4yd.org, or kylie@therock4yd.org.

SUMMER ADVENTURES

Plan your summer around The ROCK's summer adventures! All summer activities are geared toward middle and high school students including graduating 5th grade students.

Summer Adventures –All Adventures are from 8:00am-6:00pm | \$65/week breakfast, lunch & snacks included

- June 27-30 Minecraft Week
- July 18-21 Fear Factor Week
- August 15-18 Zombie Survival Week
- July 11-14 Wizards Week
- August 1-4 Pirates vs Ninjas Week

Summer Excursions –8:00am-6:00pm | Admission, transportation, breakfast, lunch, & snacks included

- July 1 Detroit Zoo \$40
- July 15 Bay City Tall Ships \$30
- August 19 Sanford Beach \$20

August 23-25 Lazy Turtle Ranch Camping Trip \$130
Three days and two nights of kayaking, outdoor games, outdoor education, fishing, campfires, archery and more. Drop off at the camp 8:00am on August 23. Pick up from camp 5:00pm August 25. Lazy Turtle Ranch is located in Sanford. Transportation arrangements can be made if needed. For more information please call Lacey or Tyler at 989-835-2542.

June 23 Cedar Point \$125
\$125 includes all day supervision, park admission, unlimited drink bracelet, lunch, snacks, t-shirt and a safe, relaxing trip on a Blue Lakes Charter bus.

THE ROCK
EXPOSURE • GROUNDED • UNPLUGGED
989-835-2542
PO Box 2143, Midland, MI 48641
Offices located at GMCC
rockon@therock4yd.org
www.therock4yd.org

EVENTS

Check out what we have planned!

Feel free to tear off this section of our newsletter to help keep yourself informed of all of our upcoming events. We hope to see your teen there!



MOVIE: CIVIL WAR

WHO: 6th-12th Grade
WHERE: NCG, Midland
WHEN: May 7
Time: 9:00AM-12:15PM | Price: \$5

Join The ROCK Staff for a private showing of Captain America: Civil War. Bring \$5 for your movie ticket and extra cash for snacks! Who's side are you on?



GEMS

WHO: 6th-12th Grade Girls
WHERE: GMCC
WHEN: Every Tuesday
Time: 4-5 PM | Price: FREE

During a typical meeting, high school mentors begin by chatting with the girls about their week over a snack. The program alternates between mini-lessons on pertinent subjects and fun projects.



ABOVE THE INFLUENCE

WHO: 6th-12th Grade
WHERE: All Three Locations
WHEN: (See website for dates)
Time: During Grounded Program
Price: FREE

ATI aims to inform, inspire, and empower teens with necessary intellectual, social, and emotional skills to avoid negative influences. Provided by The Legacy Center.



ROCK WALL!

The ROCK's 24 foot portable ROCKwall is out of storage for the season and ready to be rented out! The ROCK climbing wall is great for a wide range of events.

Non Profit Rate \$150.00/ Hour
For Profit Rate \$200.00/ Hour
If you have interest in renting our ROCK wall for an event call our offices at 989.835.2542

WAYS TO HELP

We encourage you to participate in these ongoing fundraisers.

While you are utilizing The ROCK programs, please keep in mind that great programs like these require your support. We understand that not everyone is able to donate financially, so we found some ways you can help just by going about your everyday life. Please check out these programs we have utilized and see if it is something you could implement.

SCRIP: Scrip is gift certificates from national and local retailers. Pick up a Scrip order form from a ROCK staff or download an order form on our website to place an order.

AMAZONSMILE.COM: If you shop at Amazon.com, switch over to AmazonSmile, choose "Reaching our Community Kids" as your charity and AmazonSmile will donate a percentage of your total to The ROCK!

KROGER REWARDS: If you shop at Kroger, pick up a rewards card and pick "Reaching Our Community Kids" as your charity. The ROCK receives a percentage of what you buy.

GOODSHOP.COM: If you do your online shopping through Goodshop they will donate a percentage to The ROCK. Go to www.goodsearch.com/goodshop, pick "Reaching our Community Kids" as your charity then shop from the stores you love.

STAPLES: Give our phone number (989.835.2542) during checkout and The ROCK will put your reward points to good use.

DONATE

We can't do it without your financial support.

When you make a donation, The Herbert H. and Grace A. Dow Foundation will match it 2 to 1 so your donation will go three times as far. Your gift will make a lasting impact, we promise you. On behalf of the teens we serve, thank you so much for your help. Please visit our website to donate. www.therock4yd.org

GET INVOLVED

Volunteers are critical to The ROCK.

We welcome volunteers with a wide range of skills and interests and we have opportunities for both adult volunteers and youth volunteers. If you want to volunteer your time and talent where you can make a difference in the community, visit our website under "Give" and fill out an application, or email kylie@therock4yd.org.

OUR MISSION

Build hope and resilience in youth based on a foundation of acceptance, support, and respect that results in positive life choices.

OUR VISION

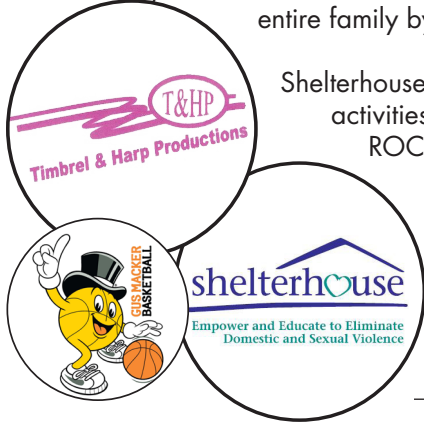
All youth have the opportunity to live their potential.

CALL FOR BANDS!

Do you know a teen band that would like to compete in this year's Battle of the Bands?

Battle of the Bands 2016 will be a TEEN SHOWCASE. This year's battle of the bands will feature teen bands whose members are no younger than 6th grade and no older than 19 years of age. If you or some teens you know fit into this category, The ROCK is taking the first 6 eligible bands that enter as this year's performers who will compete prizes. Any kind of music can be played however, lyrics MUST be family friendly. The entry fee this year is \$50/per band.

Thanks to Timbrel and Harp Productions for their sound and stage support The ROCK has been bringing this great event to Midland for the past 13 years. After listening to the community and our own hearts, it was decided that we needed to change up this event in order to more closely fit The ROCK's mission and vision. In 2006, Shelterhouse joined The ROCK to make Battle of the Bands a great event for the entire family by providing fun, free family activities.



Shelterhouse and The ROCK Center for Youth Development have partnered again this year to provide fun family activities on Main Street during the Gus Macker. Come, check out the basketball as well as the 24' mobile ROCK climbing wall, face painting, games, inflatable and activities for families starting at 10 am on Saturday, August 13th! Saturday evening will end with some great music while the bands battle for a 1st place prize of \$250, 2nd place prize of \$150, and a 3rd place prize of \$100. There will also be a \$50 prize for two outstanding artists.

For more information or to enter your band in The Battle of the Bands, contact Ginger at The ROCK: ginger@therock4yd.org or 989-835-2542.

ROCKWALL SEASON IS HERE

The ROCK has a 24' mobile rock climbing wall for rent!

Towering 24 feet above the ground, The ROCK's portable rock climbing wall makes a great interactive centerpiece for any occasion. The ROCK climbing wall is suitable for a wide range of ages and includes three routes (easy, medium and hard). The ROCK provides trained, friendly staff members who manage the setup, climbers, and the breakdown of the wall. Once our staff arrives at your location, setup time is approximately 15 minutes. The ROCK Wall is a genuine challenge, definitely exciting, and a safe way to achieve the peak experience that all climbers seek.

The ROCK wall has an advanced auto-belay system for extra safety and comes fully insured. Liability waivers are required for all climbers. (Climbers under the age of 16 must have a parent or guardians signature on the liability waiver). The ROCK also brings wrist bands for all climbers to show who is eligible for climbing as well as for climbers to show off to their friends that they climbed! Closed toed shoes are required to climb the wall, but if guests aren't wearing them, The ROCK brings some for them to borrow!

The wall is great for birthday parties, company picnics, community events, graduation parties, family reunions, block parties, etc! You just order the wall and we do the rest!*



PRICES:

Non Profit Rate.....\$150.00/ Hour
For Profit Rate.....\$200.00/ Hour

\$2.00 will be charged per mile over 30 miles from our offices, located at 2205 Jefferson Ave, Midland MI.
*Some restrictions may apply.



ONLINE AUCTION

Get ready to bid on some really great items and experiences.

The ROCK Center for Youth Development's Online Auction will be held early this year! We have moved the auction to May 12-22, 2016. We hope that you are ready to shop and bid on some great items and adventures!

How does an online auction work? We have asked businesses and individuals to donate new items and experiences to our auction. We post them online at www.biddingforgood.com/rc4yd and when it's time you bid on them! This spring we have set a goal to raise \$8,000. We cannot do this without your support! This is an exciting and fun way to help The ROCK, and at the same time have a chance to win cool items! We'll begin to fill our auction pages soon so check our site often and prepare for the bidding wars! Be sure to keep up during the auction as well as we may add new items during the auction as donations come in.

If you have interest in donating an item or experience, we will be accepting donations all through our auction. Send an email to Ginger at ginger@therock4yd.org or call her at 989-835-2542 to make a donation.

So far this year items include: gift cards for all sorts of things such as food and entertainment, treats that will be specially made for the winner, tickets to great places in the area and throughout the state, sporting event tickets, and even police ride alongs with the Midland City Police Department!

Whether you donate or bid - we need you! Funds from the auction will support ROCK programs such as the after school program which gives approximately 170 students a day a place to go after school where they can receive mentorship, homework help, play games, eat food and be in a safe place for teens. ROCK Exposure is a proven program that provides developmental educational programs that foster character, build tangible life skills, provide relevant tools, and empower young people to create a vision and plan for their future. This program is provided during the day in school classrooms. These programs are provided at no cost to parents in order that any student who wants to or needs to can attend. Please help support quality programs for teens in Midland! If the auction isn't a fit for you, please see other ways to help support The ROCK in this newsletter.

TYLER'S JOKE OF THE MONTH

Q: Why did the physics teacher break up with the biology teacher?
A: There was no chemistry.



ONLINE AUCTION

WHO: Anyone
WHERE: biddingforgood.com/rc4yd
WHEN: May 12-22, 2016
Time: Auction starts at 8:00AM
Auction ends at 10:00PM

Get ready to bid on some really great items and experiences.



ROCK THE POINT

WHO: 6th-12th Grade
WHERE: Cedar Point
WHEN: June 23, 2016
Time: 6:00 AM-12:30 AM
Price: \$125

Includes all day supervision, transportation, unlimited drink bracelet, t-shirt, admission into the park, lunch, snacks & drinks down and back.



THE ROCK'S EDGE

WHO: 6th-12th Grade
WHERE: GMCC
WHEN: Monday -Thursday
June 27-30 Minecraft Week
July 11-14 Wizards Week
July 18-21 Fear Factor Week
August 1-4 Pirates vs. Ninja Week
August 15-18 Zombie Survival Week
Time: 8:00 AM-6:00 PM
Price: \$65/Week
(Breakfast, lunch and snacks included)



MORE SUMMER FUN

WHO: 6th-12th Grade
JULY 1 Detroit Zoo \$40
JULY 15 Bay City Tall Ships \$30
AUG 19 Sanford Beach \$20
AUG 23-25 Camping Trip \$130

For more information on these summer activities, see the front of this newsletter.

STAFF CONNECTIONS

Please tear off and save this section.

Team leads have their phones on them at all times during the program and check emails frequently.

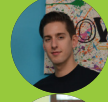
Feel free to contact them with any questions or concerns, or just to let them know you are on your way.



LACEY
PROGRAM DIRECTOR
989.835.2542
lacey@therock4yd.org



JAIMIE
TEAM LEAD AT NORTHEAST
989.259.5842
jaimie@therock4yd.org



AARON
TEAM LEAD AT THE UNDERGROUND
989.835.2542
aaron@therock4yd.org



CHASE
TEAM LEAD AT JEFFERSON
989.259.5841
chase@therock4yd.org